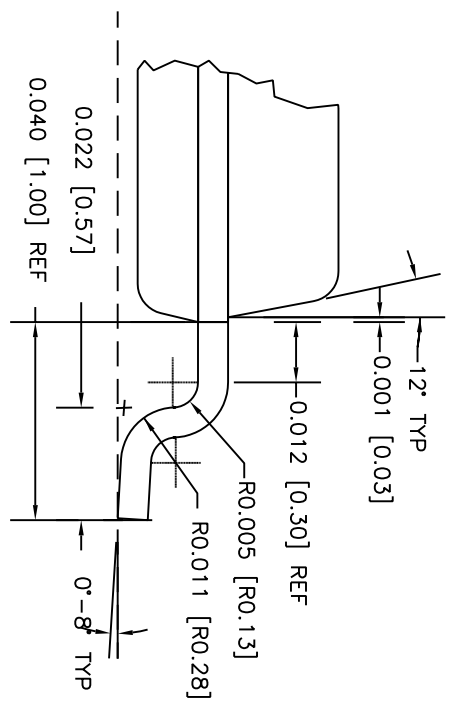
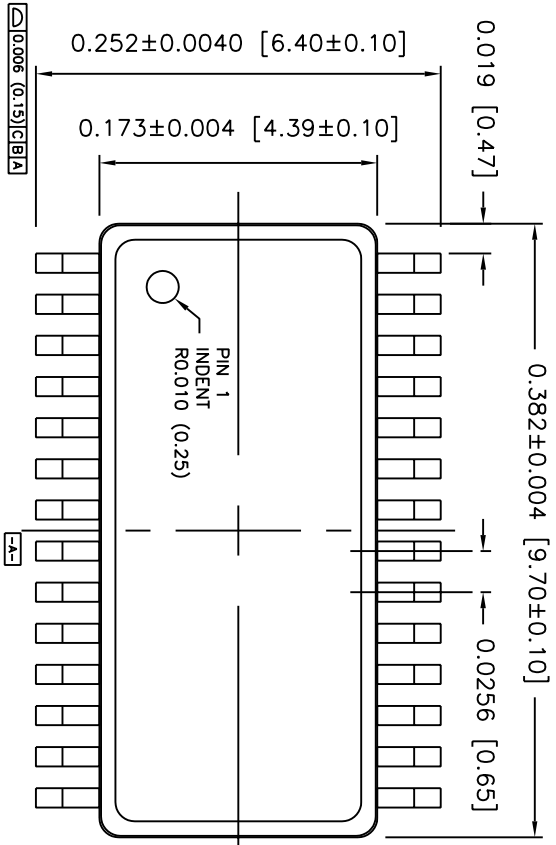
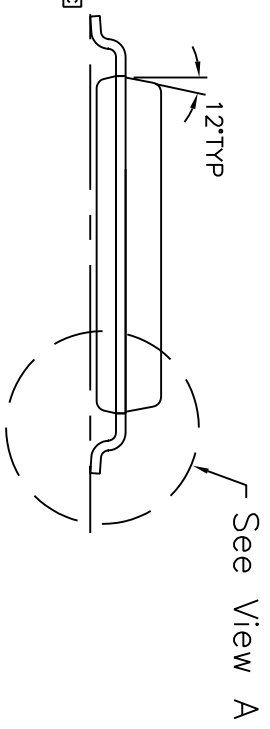
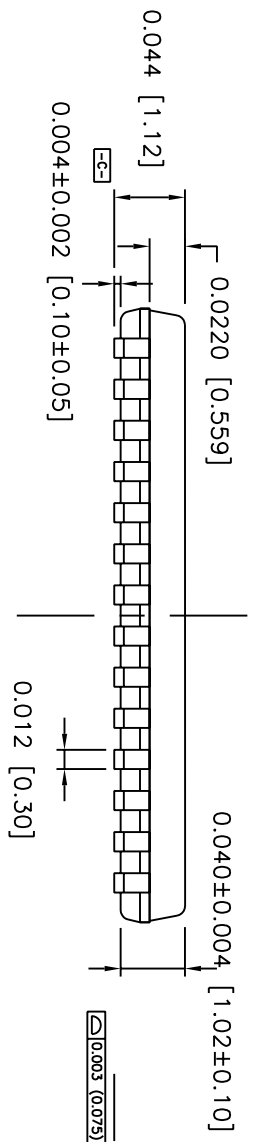


REVISIONS				
DRAWN	REV	DESCRIPTION	DATE	APPROVED
WKL	EXP	PRE-RELEASE	03/23/02	



View A 25X



- NOTES:
1. REFER TO JEDEC MO-153 FOR DIMENSIONS NOT SHOWN
 2. LEAD FINISH REFLEX 200μ (5um) MIN TIN/LEAD (SOLDER) ON COPPER

ALL INFORMATION CONTAINED HEREON IS THE PROPERTY OF PROMEX, INC. AND IS CONSIDERED PROPRIETARY AND SUBJECT TO RETURN UPON DEMAND. ACCEPTANCE AND RETENTION HEREOF SIGNIFIES AGREEMENT BY THE RECIPIENT THAT THE INFORMATION WILL NOT BE DISCLOSED TO OTHERS NOR USED CONTRARY TO THE INTEREST OF PROMEX, INC. WITHOUT PRIOR WRITTEN PERMISSION.

MATERIAL: 0.006" (150um) Half/Full Hard C194 Cu		CONTRACT NO.	
FINISH:		DRAWN Wayne Louie	DATE 03/23
UNSPECIFIED TOLERANCE: DIMS NOT TO SCALE DRAWING DIMENSIONS APPLY AFTER PLATING ALL DIMENSIONS ARE IN INCHES DEC. ± 0.12 ± 0.05 ± 0.012 MM ± 0.005 ± 0.002 ± 0.0005 INCH ANGLES ± 5°		CHECK	DESIGN
USED ON		DESIGN ACTIVITY	SCALE A
NEXT ASSEMBLY		CUSTOMER	FILE NAME TSSOP28PO.dwg
QTY			SHEET 1 OF 1
		TITLE TSSOP 28ID Package outline	
		3075 Oakmead Village Drive Santa Clara, CA 95051	
		SIZE A	REV EXP